



Remote Control Guide



Remote Layout

Power

Turn on/off a selected device.

List

Display a list of recorded series on your DVR.

Menu

Displays the menu.

Guide

Displays the Program Guide.

Day +/-

Jump ahead or back one day in the program guide.

Vol +/-

Raise or lower the volume.

Mute

Sound off or on.

Favourites

View your favourite channels.

Live

Return to watching live TV.

DVR Functions

Skip Forward, Skip Back, Rewind, Play, Fast Forward, Stop, Pause, Record.

Browse, Search, Arrow, OK

Navigate and select on screen choices.

Exit

Exit the current screen.

Page +/-

Jump between pages in the Guide

Red, Green, Yellow, Blue

Additional features on your set-top box (STB).

Ch +/-

Change to the next higher or lower channel.

Last

Recall the last channel you were watching.





Programming Your Remote

To search for a code for your TV:

1. Turn on your TV.
2. On the remote control, press TV once, it will blink once. Then press and hold **SETUP** on the top left of the remote until the TV button blinks twice.
3. Type **9 9 1**. The TV button will blink twice.
4. Aim the remote control at the TV and press **POWER** once.
5. Now press and release the **CH+** button continuously, then stop when the TV turns off.
Note: In the search mode, the remote control will IR codes from its library to the selected device, starting with the most popular code first.
6. Press **POWER**. The TV should turn on.
Note: If the TV does not turn on during step 6, then slowly press and release CH- to go back through the codes, then press SETUP when the TV turns on.
7. Press **SETUP** once to lock in the code. The LED will blink twice to indicate that the code is saved.





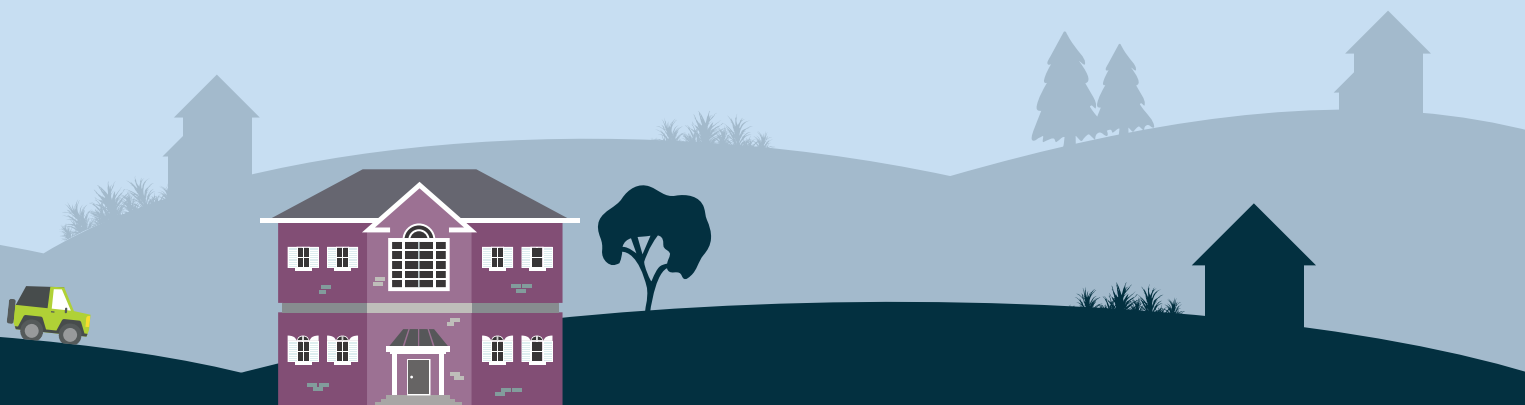
Unlock the Default Setting to Make Device Buttons Programmable

The AUD, DVD and VCR mode keys have a default setting which means they are automatically set to the set-top box. If you would like to program these mode keys to your devices, please follow these instructions to lock the default setting.



TV = television
AUD = audio receiver
DVD = digital video disc
AUX = auxiliary device
STB = set-top box (NRBN TV)

1. Press and Hold **SETUP** until the mode key blinks twice.
2. Type **9 9 2**.
3. Then press the mode key you desire to program twice.
4. This will remove the STB mode and a new Audio, DVD or VCR code can now be programmed.
5. Follow steps 2-7 on the previous page of this guide, replacing the word "TV" with the name of the mode key you just unlocked.





Remote Functions

When the guide is on screen: (these functions only work when the guide is showing on the screen)

Red button: weather pops up on top corner (while it is up, you have options to see forecast (green button) or radar (yellow button)).

Green Button: some channels have a “restart” feature – when you hit the green button while on a channel showing a green circle, the program will start from the beginning – you don’t need DVR for this feature.

Yellow Button: Search – this will search through the guide for all times the program is on again.

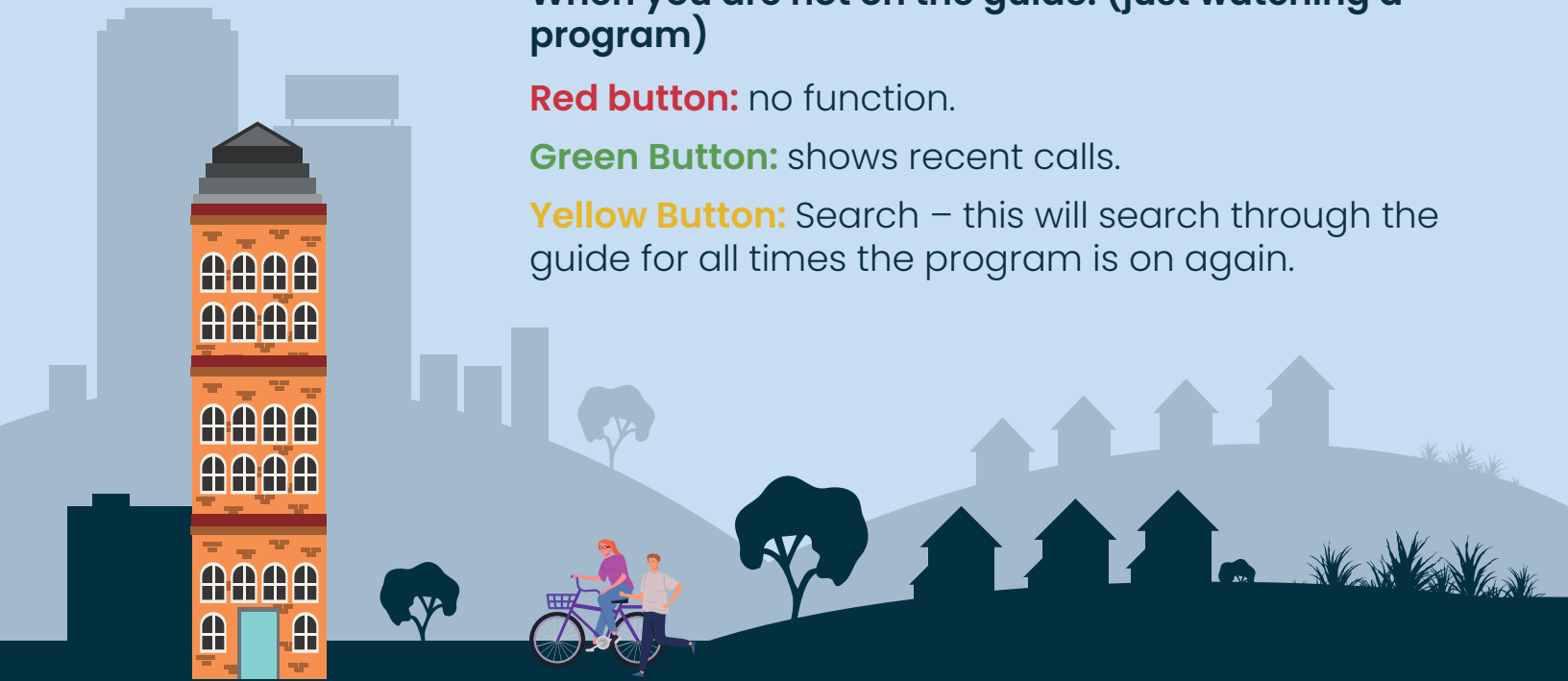
Blue Button: Guide Filter – every time you hit the blue button, the guide will change based on the filter, (e.g. subscribed channels only, movies, news, etc.).

When you are not on the guide: (just watching a program)

Red button: no function.

Green Button: shows recent calls.

Yellow Button: Search – this will search through the guide for all times the program is on again.





Niagara Regional Broadband Network

4343 Morrison St., 2nd Floor
Niagara Falls, ON
L2E 6Z9



fibre@NRBN.ca

www.NRBN.ca



1 (833) 633-3638